

INDICATIVE SCREEN DETAIL

FINISHES SCHEDULE

- AF01 TEXTURE PAINT FINISH ON PROFILED CONCRETE - DULUX DIESKAU
- AF02 DARK GREY TEXTURE PAINT ON PROFILED CONCRETE - DULUX MONUMENT
- AF03 DARK GREY TEXTURE PAINT ON CEMENT SHEET CLADDING - DULUX MONUMENT
- EP01 FERADOR NATURAL GREY PAINT ON STEEL
- EP02 DARK GREY PAINT FINISH (DOORS) - DULUX MONUMENT
- GT01 CLEAR SHOP FRONT GLAZING
- GT02 GREY TINTED APARTMENT GLAZING
- GT03 GREY TINTED BALUSTRADE GLAZING
- GT04 FROSTED GLASS - LIGHTBOXES
- MF01 POWDER-COATED ALUMINIUM METAL CLADDING WITH EXPRESSED FIXINGS - DULUX BRIGHTSILVER METALLIC
- MF02 POWDER-COATED METAL CLADDING WITH EXPRESSED FIXINGS - DULUX SURF MIST
- MF03 POLISHED STAINLESS STEEL
- MF04 POWDER COATED METAL GARAGE DOOR PANELS - DULUX MONUMENT
- MF05 POWDER-COATED ALUMINIUM - DULUX MONUMENT
- MF06 COMPOSITE METAL CLADDING SYSTEM - GLOSS WHITE
- MF07 POWDER-COATED ALUMINIUM - DULUX STONE GREY
- MF08 POWDER-COATED ALUMINIUM - TO MATCH INTERPON GILDED GREEN SABLE
- TL01 BLUESTONE TILES
- TM01 CEDAR PRIVACY SCREENS

REVISIONS

No	Date	Description	By

PROJECT TITLE
380 DEGREES
 380-386 BAY STREET
 BRIGHTON, 3186
 (CHR BAY ST & MALE ST)

DRAWING TITLE
NORTH ELEVATION

SCALE: @ B1
1 : 100

PROJECT No: 210237

DATE: 14/11/2011

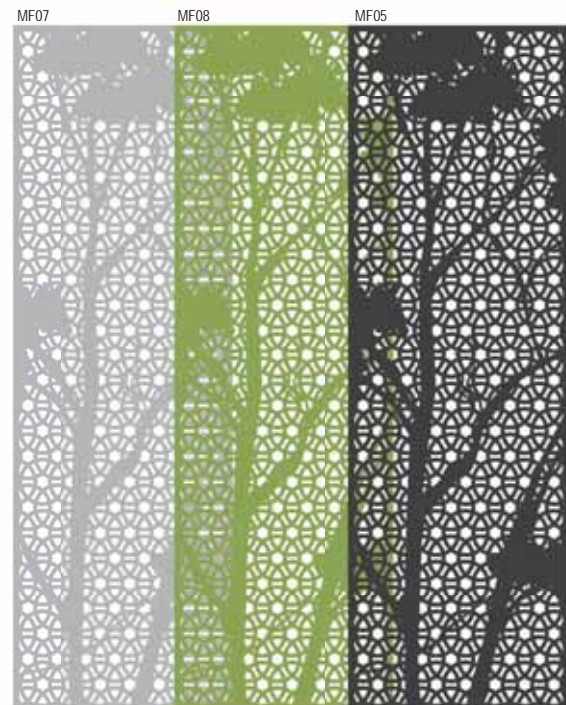
DRAWN BY: KL / GD

DWG No: TP02.01

153 STURT STREET SOUTHBANK
 VIC 3006 AUSTRALIA
 T 61 3 9268 6800
 F 61 3 9268 6888
 info@rothelwman.com.au
 www.rothelwman.com.au
 ACN 005 783 997 ©copyright



DISCLAIMER:
 ROTHELOWMAN Property Pty. Ltd. retain all common law, statutory law and other rights including copyright and intellectual property rights in respect of this document.
 The recipient indemnifies ROTHELOWMAN Property Pty. Ltd. against all claims resulting from use of this document for any purpose other than its intended use, unauthorised changes or reuse of the document on other projects without the permission of ROTHELOWMAN Property Pty. Ltd.
 Under no circumstance shall transfer of this document be deemed a sale or constitute a transfer of the license to use this document.



INDICATIVE SCREEN DETAIL

FINISHES SCHEDULE

- AF01 TEXTURE PAINT FINISH ON PROFILED CONCRETE - DULUX DESKAU
- AF02 DARK GREY TEXTURE PAINT ON PROFILED CONCRETE - DULUX MONUMENT
- AF03 DARK GREY TEXTURE PAINT ON CEMENT SHEET CLADDING - DULUX MONUMENT
- EP01 FERAGOR NATURAL GREY PAINT ON STEEL
- EP02 DARK GREY PAINT FINISH (DOORS) - DULUX MONUMENT
- GT01 CLEAR SHOP FRONT GLAZING
- GT02 GREY TINTED APARTMENT GLAZING
- GT03 GREY TINTED BALUSTRADE GLAZING
- GT04 FROSTED GLASS - LIGHTBOXES
- MF01 POWDER COATED ALUMINIUM METAL CLADDING WITH EXPRESSED FIXINGS - DULUX BRIGHT SILVER METALLIC
- MF02 POWDER COATED METAL CLADDING WITH EXPRESSED FIXINGS - DULUX SURF MIST
- MF03 POLISHED STAINLESS STEEL
- MF04 POWDER COATED METAL GARAGE DOOR PANELS - DULUX MONUMENT
- MF05 POWDER COATED ALUMINIUM - DULUX MONUMENT
- MF06 COMPOSITE METAL CLADDING SYSTEM - GLOSS WHITE
- MF07 POWDER COATED ALUMINIUM - DULUX STONE GREY
- MF08 POWDER COATED ALUMINIUM - TO MATCH INTERPON GILDED GREEN SABLE
- TU01 BLUESTONE TILES
- TM01 CEDAR PRIVACY SCREENS

REVISIONS		
No	Date	Description

PROJECT TITLE
380 DEGREES
 380-386 BAY STREET
 BRIGHTON, 3186
 (Chr BAY ST & MALE ST)

SCALE: @ B1
1 : 100

DATE:
 14/11/2011

DWG No:
TP02.02

PROJECT No:
210237

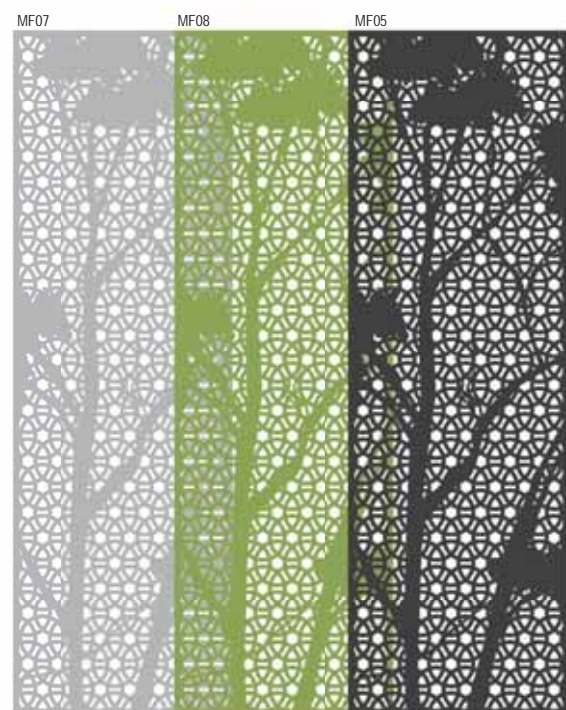
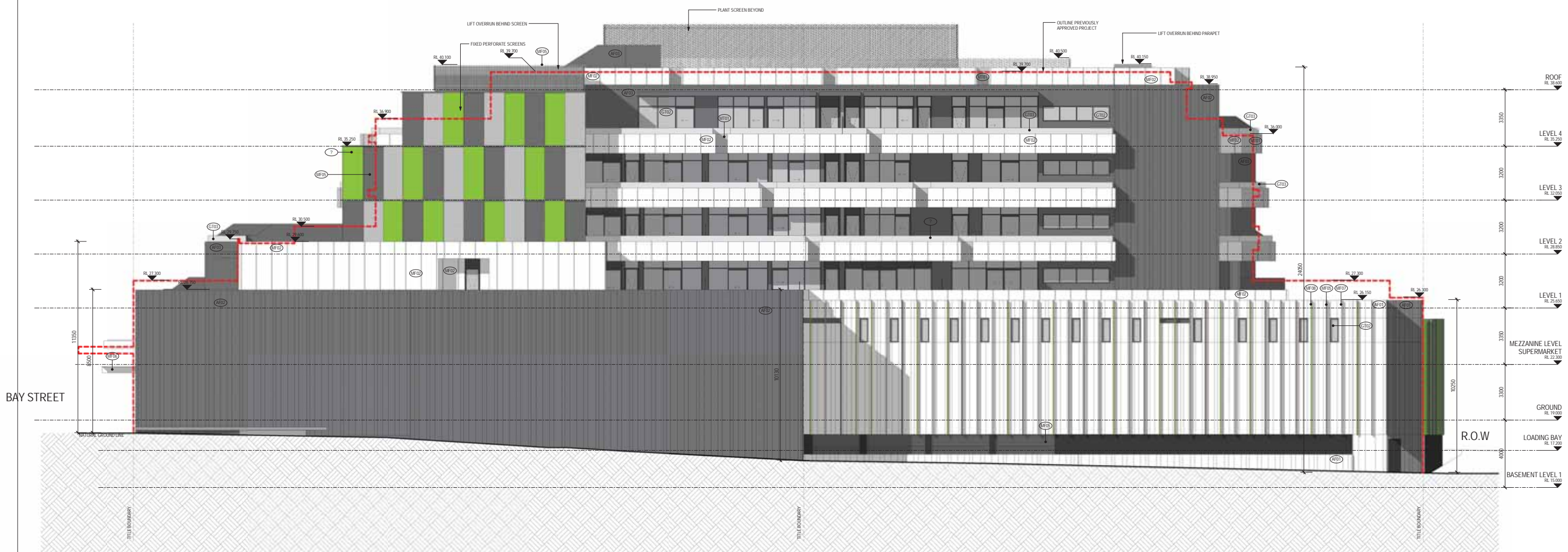
DRAWN BY:
 KL / GD

REV

153 STURT STREET SOUTHBANK
 VIC 3006 AUSTRALIA
 T 61 3 9268 6800
 F 61 3 9268 6888
 info@rothelwman.com.au
 www.rothelwman.com.au
 ACN 005 783 997 ©copyright



DISCLAIMER:
 ROTHELOWMAN Property Pty. Ltd. retain all common law, statutory law and other rights including copyright and intellectual property rights in respect of this document.
 The recipient indemnifies ROTHELOWMAN Property Pty. Ltd. against all claims resulting from use of this document for any purpose other than its intended use, unauthorized changes or reuse of the document on other projects without the permission of ROTHELOWMAN Property Pty. Ltd.
 Under no circumstance shall transfer of this document be deemed a sale or constitute a transfer of the license to use this document.



INDICATIVE SCREEN DETAIL

FINISHES SCHEDULE

- AF01 TEXTURE PAINT FINISH ON PROFILED CONCRETE - DULUX DESKAL
- AF02 DARK GREY TEXTURE PAINT ON PROFILED CONCRETE - DULUX MONUMENT
- AF03 DARK GREY TEXTURE PAINT ON CEMENT SHEET CLADDING - DULUX MONUMENT
- EP01 FERADOR NATURAL GREY PAINT ON STEEL
- EP02 DARK GREY PAINT FINISH (DOORS) - DULUX MONUMENT
- GT01 CLEAR SHOP FRONT GLAZING
- GT02 GREY TINTED APARTMENT GLAZING
- GT03 GREY TINTED BALUSTRADE GLAZING
- GT04 FROSTED GLASS - LIGHTBOXES
- MF01 POWDERCOATED ALUMINIUM METAL CLADDING WITH EXPRESSED FIXINGS - DULUX BRIGHT SILVER METALLIC
- MF02 POWDER COATED METAL CLADDING WITH EXPRESSED FIXINGS - DULUX SURF MIST
- MF03 POLISHED STAINLESS STEEL
- MF04 POWDER COATED METAL GARAGE DOOR PANELS - DULUX MONUMENT
- MF05 POWDER COATED ALUMINIUM - DULUX MONUMENT
- MF06 COMPOSITE METAL CLADDING SYSTEM - GLOSS WHITE
- MF07 POWDER COATED ALUMINIUM - DULUX STONE GREY
- MF08 POWDER COATED ALUMINIUM - TO MATCH INTERPON GILDED GREEN SABLE
- TL01 BLUESTONE TILES
- TM01 CEDAR PRIVACY SCREENS

No	Date	Description	By
-	20.10.11	TP amendments	GD

PROJECT TITLE
380 DEGREES
 380-386 BAY STREET
 BRIGHTON, 3186
 (Chr BAY ST & MALE ST)

SCALE: @ B1
1 : 100

DATE:
 14/11/2011

DWG No:
TP02.04

PROJECT No:
210237

DRAWN BY:
 KL / GD

REV

153 STURT STREET SOUTHBANK
 VIC 3006 AUSTRALIA
 T 61 3 9268 6800
 F 61 3 9268 6888
 info@rothelwman.com.au
 www.rothelwman.com.au
 ACN 005 783 997 ©copyright



DISCLAIMER:
 ROTHELOWMAN Property Pty. Ltd. retain all common law, statutory law and other rights including copyright and intellectual property rights in respect of this document.
 The recipient indemnifies ROTHELOWMAN Property Pty. Ltd. against all claims resulting from use of this document for any purpose other than its intended use, unauthorized changes or reuse of the document on other projects without the permission of ROTHELOWMAN Property Pty. Ltd.
 Under no circumstance shall transfer of this document be deemed a sale or constitute a transfer of the license to use this document.



A SECTION A



B COURTYARD SECTION B

FINISHES SCHEDULE

- AF01 TEXTURE PAINT FINISH ON PROFILED CONCRETE - DULUX DIESSAU
- AF02 DARK GREY TEXTURE PAINT ON PROFILED CONCRETE - DULUX MONUMENT
- AF03 DARK GREY TEXTURE PAINT ON CEMENT SHEET CLADDING - DULUX MONUMENT
- EP01 FERADOR NATURAL GREY PAINT ON STEEL
- EP02 DARK GREY PAINT FINISH (DOORS) - DULUX MONUMENT
- GT01 CLEAR SHOP FRONT GLAZING
- GT02 GREY TINTED APARTMENT GLAZING
- GT03 GREY TINTED BALUSTRADE GLAZING
- GT04 FROSTED GLASS - LIGHTBOXES
- MF01 POWDER COATED ALUMINIUM METAL CLADDING WITH EXPRESSED FIXINGS - DULUX SURF MET
- MF02 POWDER COATED METAL CLADDING WITH EXPRESSED FIXINGS - DULUX SURF MET
- MF03 POLISHED STAINLESS STEEL
- MF04 POWDER COATED METAL GARAGE DOOR PANELS - DULUX MONUMENT
- MF05 POWDER COATED ALUMINIUM - DULUX MONUMENT
- MF06 COMPOSITE METAL CLADDING SYSTEM - GLOSS WHITE
- MF07 POWDER COATED ALUMINIUM - DULUX STONE GREY
- MF08 POWDER COATED ALUMINIUM - TO MATCH INTERPON GILDED GREEN SABLE
- TL01 BLUESTONE TILES
- TM01 CEDAR PRIVACY SCREENS

DISCLAIMER:
 ROTHELOWMAN Property Pty. Ltd. retain all common law, statutory law and other rights including copyright and intellectual property rights in respect of this document.
 The recipient indemnifies ROTHELOWMAN Property Pty. Ltd. against all claims resulting from use of this document for any purpose other than its intended use, unauthorized changes or reuse of the document on other projects without the permission of ROTHELOWMAN Property Pty. Ltd.
 Under no circumstance shall transfer of this document be deemed a sale or constitute a transfer of the license to use this document.

14/11/2011 10:05:10 AM

REVISIONS		
No	Date	Description

PROJECT TITLE
380 DEGREES
 380-386 BAY STREET
 BRIGHTON, 3186
 (Chr BAY ST & MALE ST)

SCALE: @ B1
1 : 100

PROJECT No:
210237

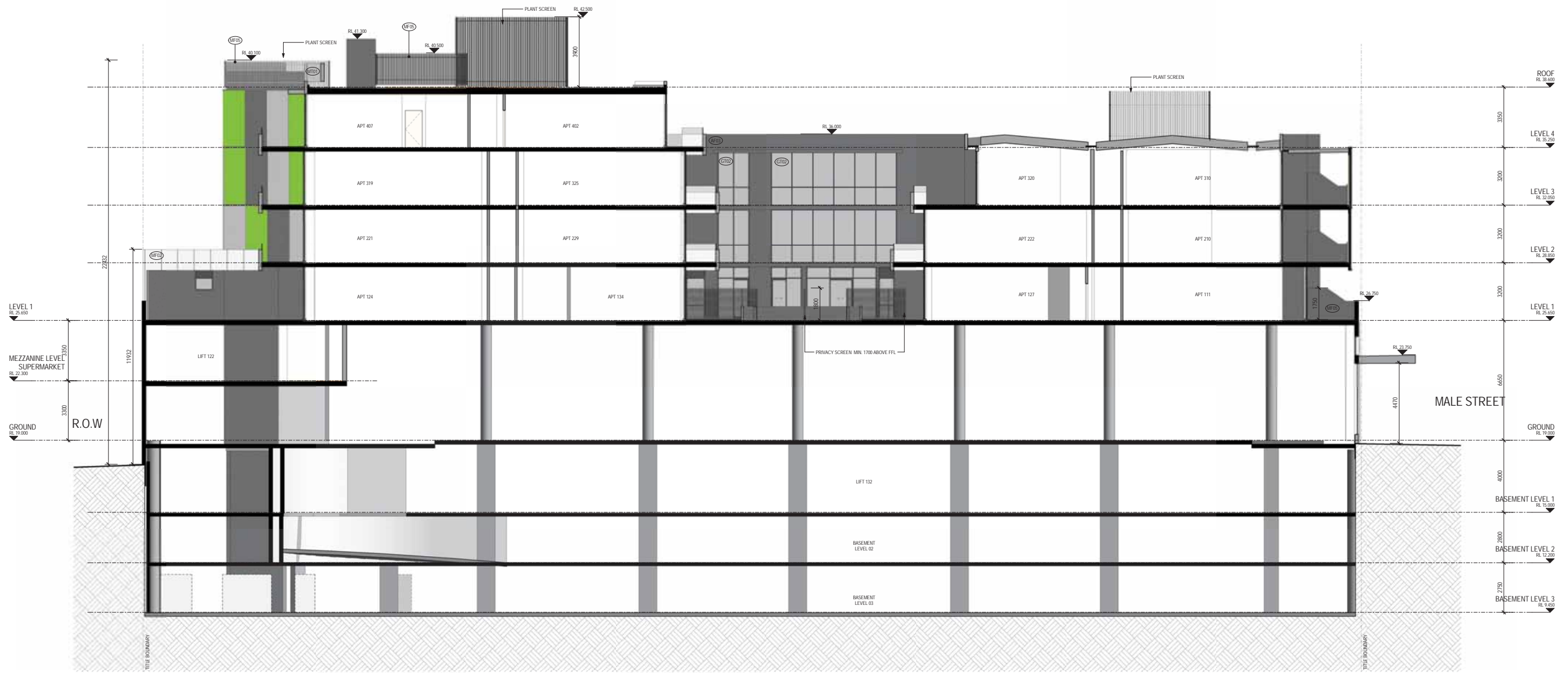
DATE:
 14/11/2011

DRAWN BY:
 KL / GD

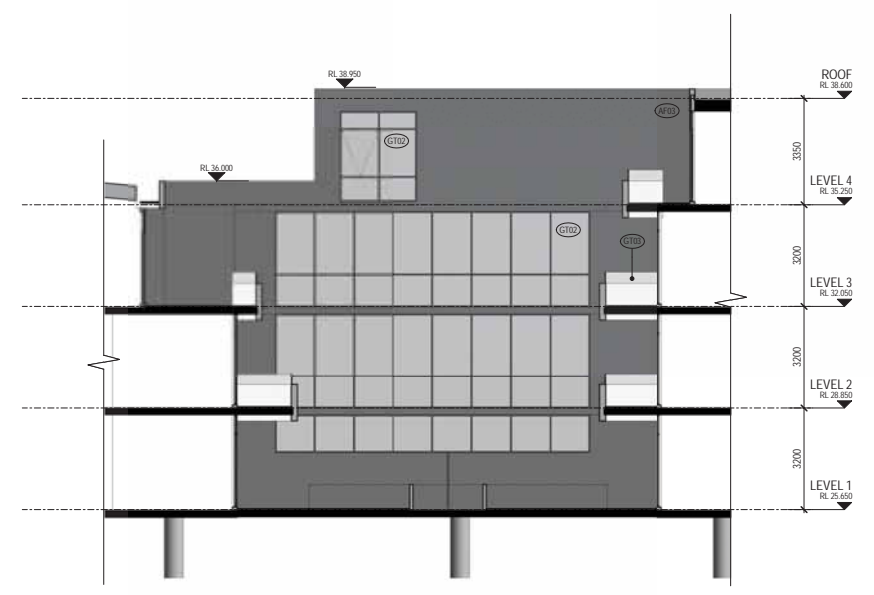
DWG No:
TP02.05

153 STURT STREET SOUTHBANK
 VIC 3006 AUSTRALIA
 T 61 3 9268 6800
 F 61 3 9268 6888
 info@rothelwman.com.au
 www.rothelwman.com.au
 ACN 005 783 997 ©copyright





C SECTION C



D COURTYARD SECTION D

FINISHES SCHEDULE	
AF01	TEXTURE PAINT FINISH ON PROFILED CONCRETE - DULUX DIESKAU
AF02	DARK GREY TEXTURE PAINT ON PROFILED CONCRETE - DULUX MONUMENT
AF03	DARK GREY TEXTURE PAINT ON CEMENT SHEET CLADDING - DULUX MONUMENT
EP01	FERRADOR NATURAL GREY PAINT ON STEEL
EP02	DARK GREY PAINT FINISH (DOORS) - DULUX MONUMENT
GT01	CLEAR SHOP FRONT GLAZING
GT02	GREY TINTED APARTMENT GLAZING
GT03	GREY TINTED BALUSTRADE GLAZING
GT04	FROSTED GLASS - LIGHTBOXES
MF01	POWDER COATED ALUMINIUM METAL CLADDING WITH EXPRESSED FIXINGS - DULUX BRIGHTSILVER METALLIC
MF02	POWDER COATED METAL CLADDING WITH EXPRESSED FIXINGS - DULUX SURF MIST
MF03	POLISHED STAINLESS STEEL
MF04	POWDER COATED METAL GARAGE DOOR PANELS - DULUX MONUMENT
MF05	POWDER COATED ALUMINIUM - DULUX MONUMENT
MF06	COMPOSITE METAL CLADDING SYSTEM - GLOSS WHITE
MF07	POWDER COATED ALUMINIUM - DULUX STONE GREY
MF08	POWDER COATED ALUMINIUM - TO MATCH INTERPON GILDED GREEN SABLE
TL01	BLUESTONE TILES
TM01	CEDAR PRIVACY SCREENS

DISCLAIMER:
 ROTHELOWMAN Property Pty. Ltd. retain all common law, statutory law and other rights including copyright and intellectual property rights in respect of this document.
 The recipient indemnifies ROTHELOWMAN Property Pty. Ltd. against all claims resulting from use of this document for any purpose other than its intended use, unauthorized changes or reuse of the document on other projects without the permission of ROTHELOWMAN Property Pty. Ltd.
 Under no circumstance shall transfer of this document be deemed a sale or constitute a transfer of the license to use this document.

REVISIONS			
No	Date	Description	By

PROJECT TITLE
380 DEGREES
 380-386 BAY STREET
 BRIGHTON, 3186
 (Chr BAY ST & MALE ST)

SCALE: @ B1
1 : 100

PROJECT No:
210237

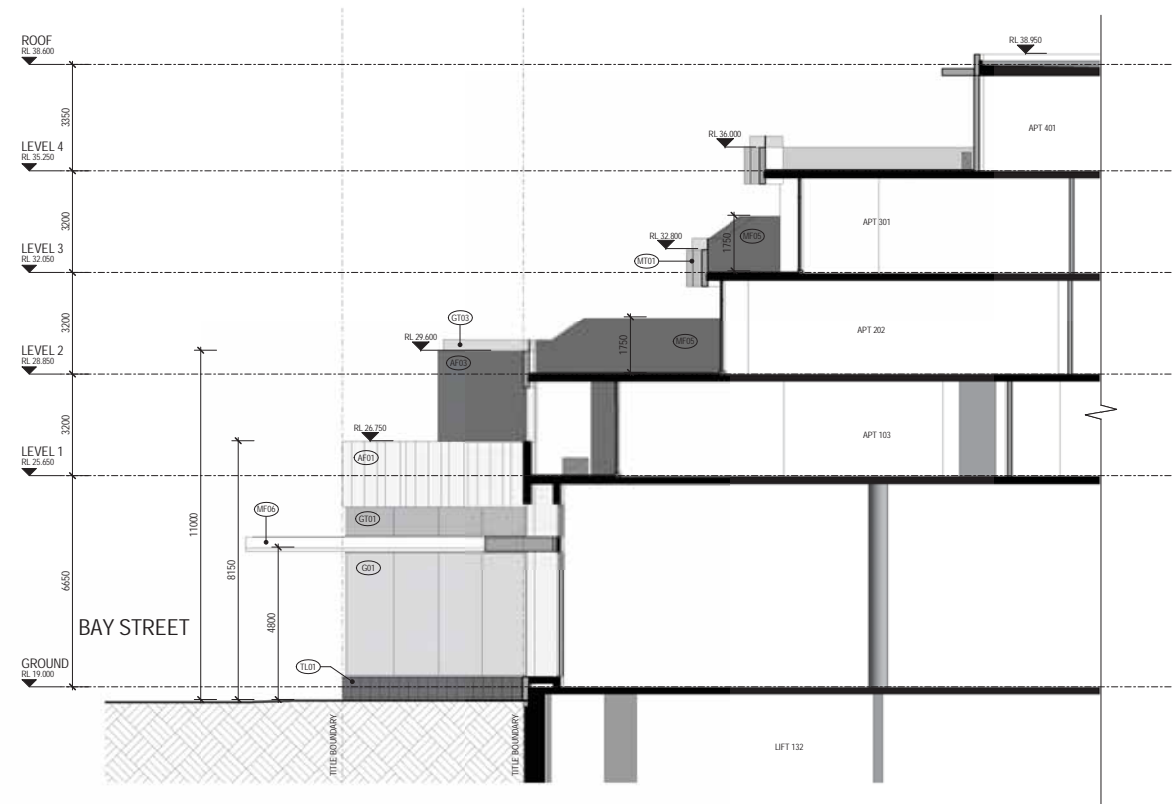
DATE:
 14/11/2011

DRAWN BY:
 KL / GD

DWG No:
TP02.06

153 STURT STREET SOUTHBANK
 VIC 3006 AUSTRALIA
 T 61 3 9268 6800
 F 61 3 9268 6888
 info@rothelwman.com.au
 www.rothelwman.com.au
 ACN 005 783 997 ©copyright

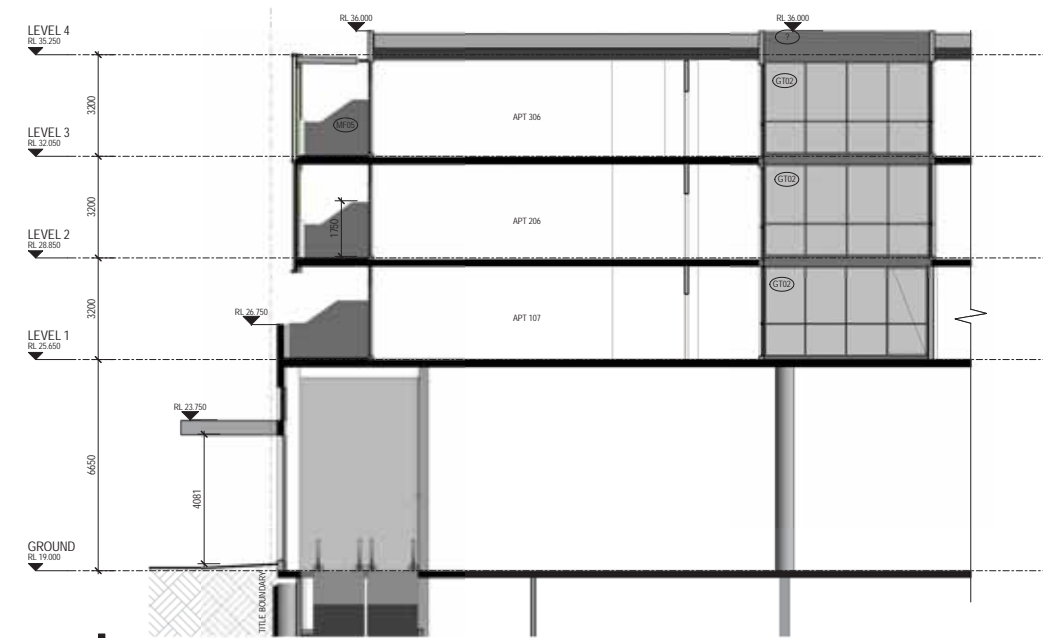
ROTHELOWMAN



E SECTION E



F SECTION F



G SECTION G

FINISHES SCHEDULE	
AF01	TEXTURE PAINT FINISH ON PROFILED CONCRETE - DULUX DIESKAU
AF02	DARK GREY TEXTURE PAINT ON PROFILED CONCRETE - DULUX MONUMENT
AF03	DARK GREY TEXTURE PAINT ON CEMENT SHEET CLADDING - DULUX MONUMENT
EP01	PERADOR NATURAL GREY PAINT ON STEEL
EP02	DARK GREY PAINT FINISH (DOORS) - DULUX MONUMENT
GT01	CLEAR SHOP FRONT GLAZING
GT02	GREY TINTED APARTMENT GLAZING
GT03	GREY TINTED BALLSTRADIC GLAZING
GT04	FROSTED GLASS - LIGHTBOXES
MF01	POWDER COATED ALUMINIUM METAL CLADDING WITH EXPRESSED FIXINGS
MF02	DULUX BRIGHTSILVER METALLIC
MF03	POWDER COATED METAL CLADDING WITH EXPRESSED FIXINGS
MF04	DULUX SURF MIST
MF05	POLISHED STAINLESS STEEL
MF06	POWDER COATED METAL GARAGE DOOR PANELS - DULUX MONUMENT
MF07	POWDER COATED ALUMINIUM - DULUX MONUMENT
MF08	POWDER COATED ALUMINIUM - GLOSS WHITE
MF09	POWDER COATED ALUMINIUM - DULUX STONE GREY
MF10	POWDER COATED ALUMINIUM - TO MATCH INTERPON GILDED GREEN SABLE
TL01	BLUESTONE TILES
TM01	CEDAR PRIVACY SCREENS

DISCLAIMER:
 ROTHELOWMAN Property Pty. Ltd. retain all common law, statutory law and other rights including copyright and intellectual property rights in respect of this document.
 The recipient indemnifies ROTHELOWMAN Property Pty. Ltd. against all claims resulting from use of this document for any purpose other than its intended use, unauthorized changes or reuse of the document on other projects without the permission of ROTHELOWMAN Property Pty. Ltd.
 Under no circumstance shall transfer of this document be deemed a sale or constitute a transfer of the license to use this document.

14/11/2011 10:05:39 AM

REVISIONS		
No	Date	Description

PROJECT TITLE
380 DEGREES
 380-386 BAY STREET
 BRIGHTON, 3186
 (Chr BAY ST & MALE ST)

SCALE: @ B1
1 : 100

PROJECT No:
210237
 153 STURT STREET SOUTHBANK
 VIC 3006 AUSTRALIA
 T 61 3 9268 6800
 F 61 3 9268 6888
 info@rothelwman.com.au
 www.rothelwman.com.au
 ACN 005 783 997 ©copyright



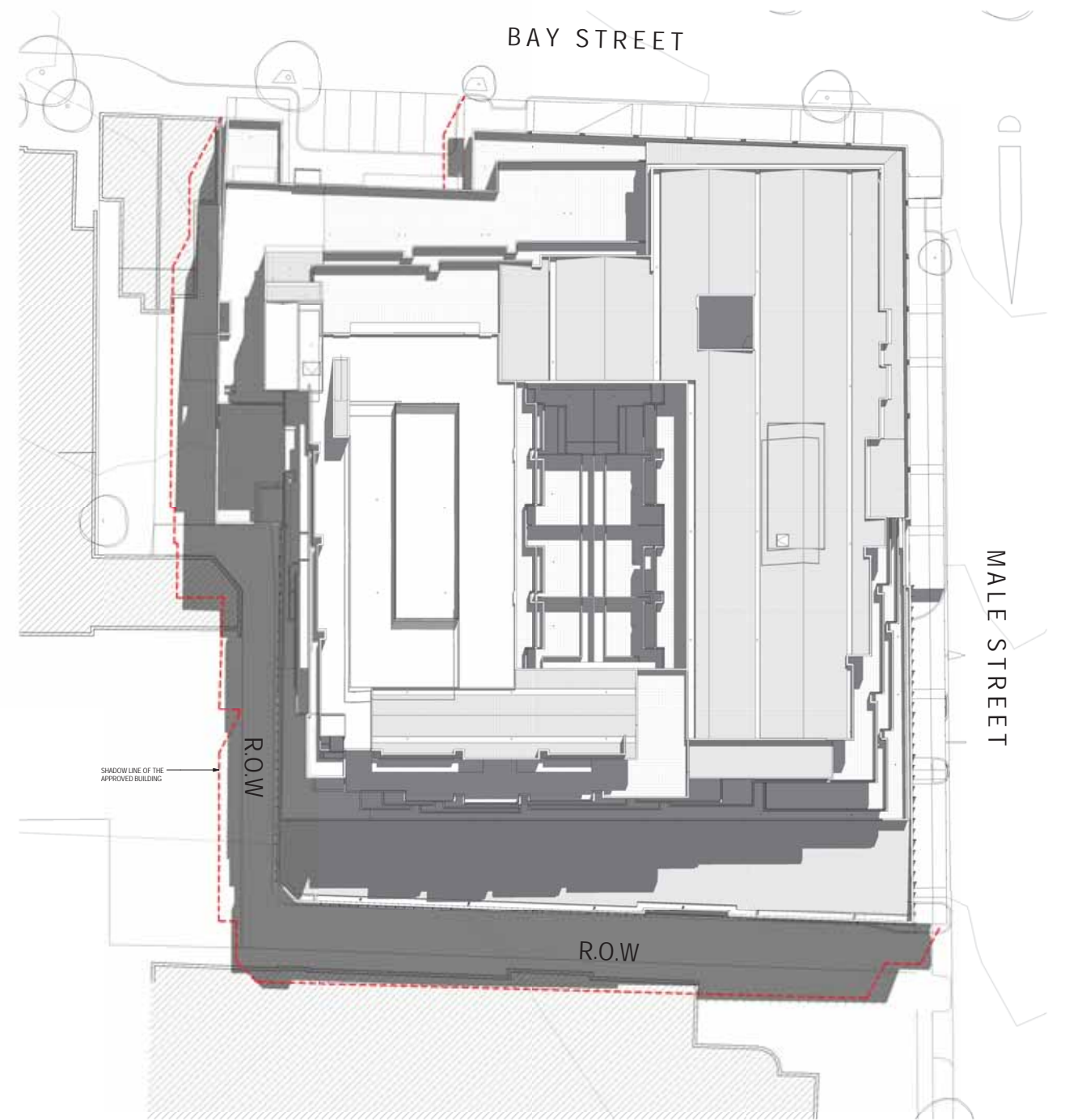
DRAWING TITLE
SECTIONS E & F

DATE:
 14/11/2011
 DWG No:
TP02.07

DRAWN BY:
 KL / GD
 REV



1 SHADOW DIAGRAM SEPTEMBER 22ND 0900



2 SHADOW DIAGRAM SEPTEMBER 22ND 1100

DISCLAIMER:
 ROTHELOWMAN Property Pty. Ltd. retain all common law, statutory law and other rights including copyright and intellectual property rights in respect of this document.
 The recipient indemnifies ROTHELOWMAN Property Pty. Ltd. against all claims resulting from use of this document for any purpose other than its intended use, unauthorized changes or reuse of the document on other projects without the permission of ROTHELOWMAN Property Pty. Ltd.
 Under no circumstance shall transfer of this document be deemed a sale or constitute a transfer of the license to use this document.

14/11/2011 10:06:06 AM

REVISIONS		
No	Date	Description

PROJECT TITLE
380 DEGREES
 380-386 BAY STREET
 BRIGHTON, 3186
 (Cnr BAY ST & MALE ST)

DRAWING TITLE
SHADOW DIAGRAMS

SCALE: @ B1
1 : 250

DATE:
 14/11/2011

DWG No:
TP03.01

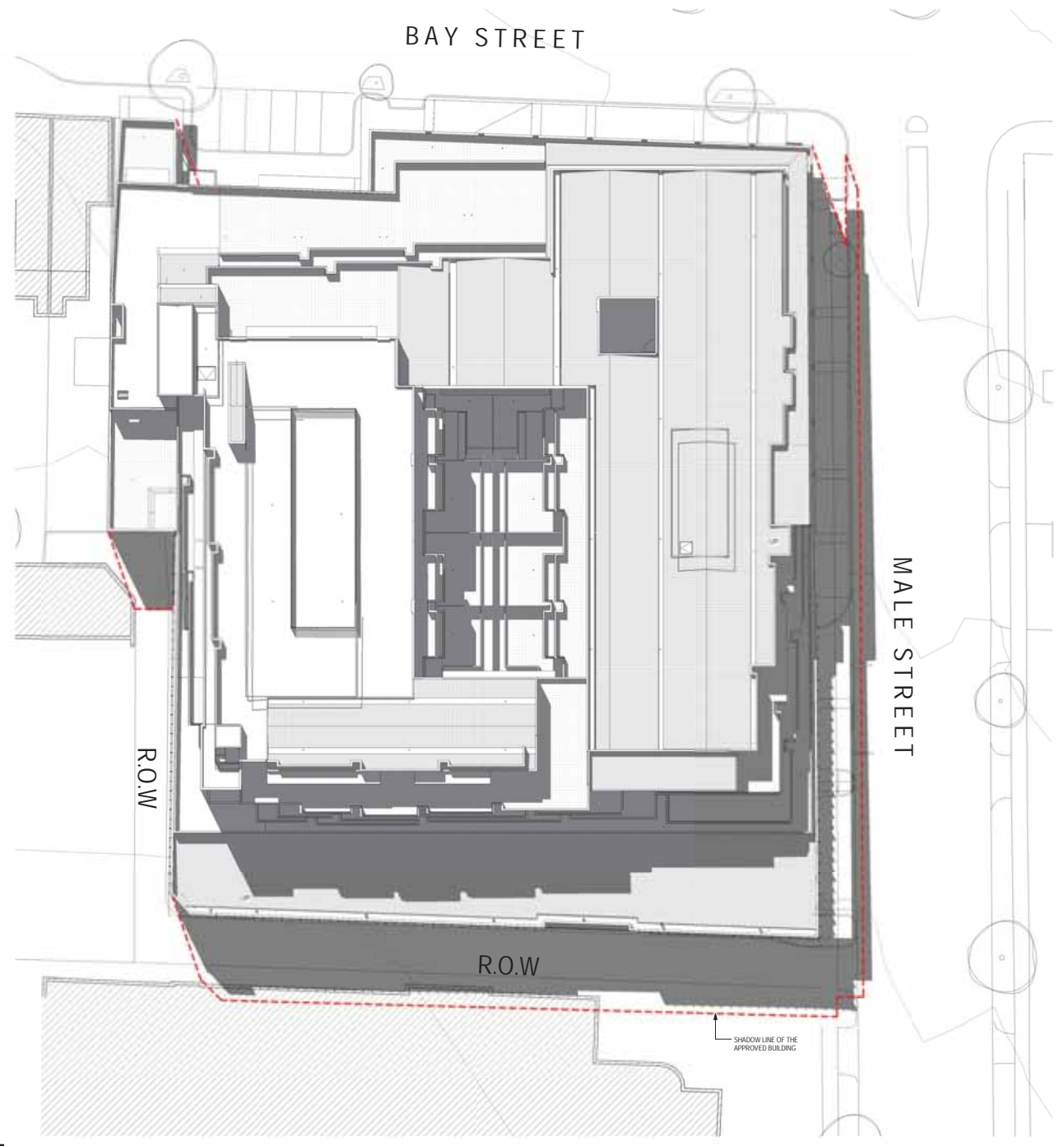
PROJECT No:
210237

DRAWN BY:
 KL

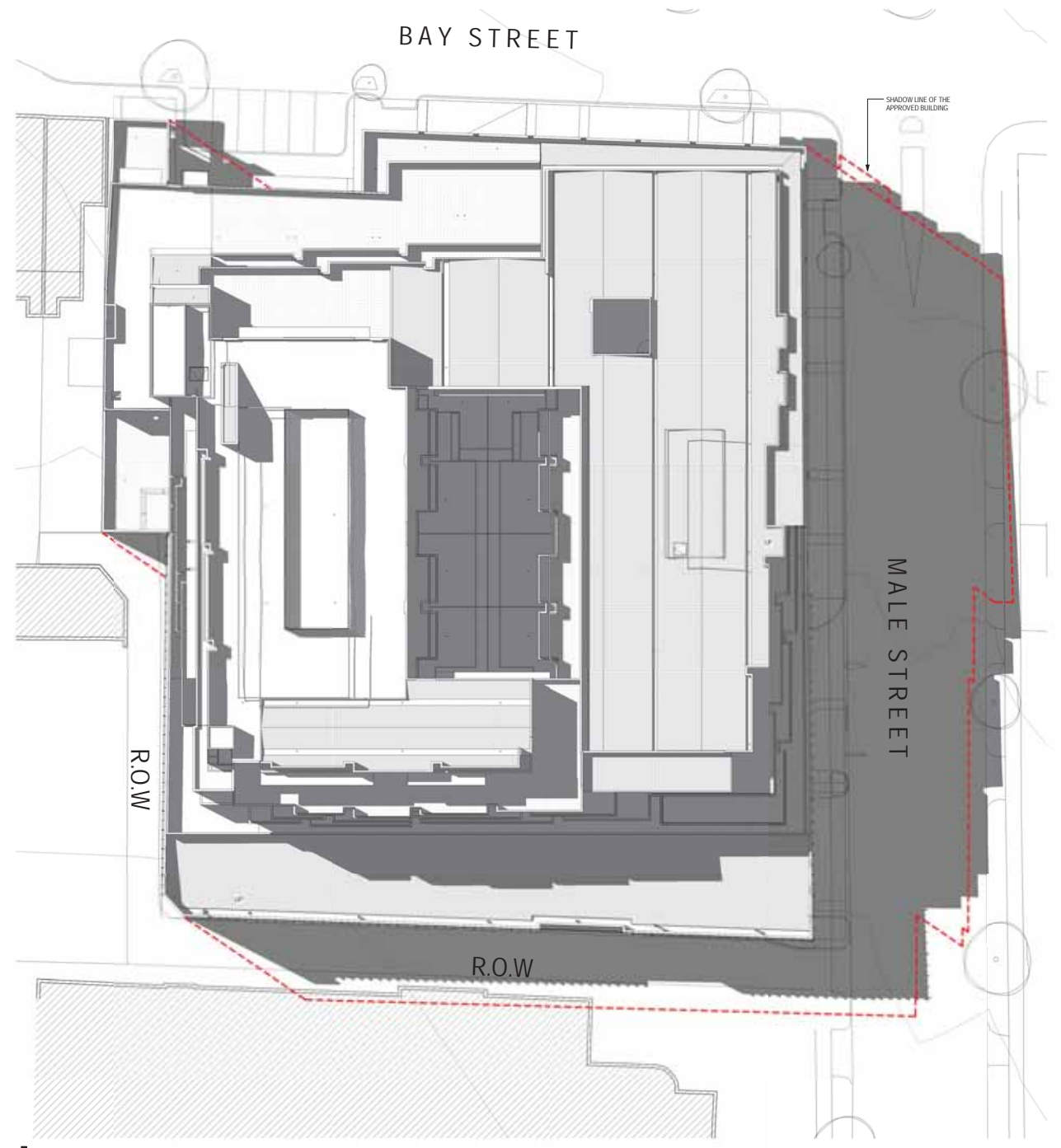
REV

153 STURT STREET SOUTHBANK
 VIC 3006 AUSTRALIA
 T 61 3 9268 6800
 F 61 3 9268 6888
 info@rothelwman.com.au
 www.rothelwman.com.au
 ACN 005 783 997 ©copyright





1 SHADOW DIAGRAM SEPTEMBER 22ND 1300



2 SHADOW DIAGRAM SEPTEMBER 22ND 1500

DISCLAIMER:
 ROTHELOWMAN Property Pty. Ltd. retain all common law, statutory law and other rights including copyright and intellectual property rights in respect of this document.
 The recipient indemnifies ROTHELOWMAN Property Pty. Ltd. against all claims resulting from use of this document for any purpose other than its intended use, unauthorized changes or reuse of the document on other projects without the permission of ROTHELOWMAN Property Pty. Ltd.
 Under no circumstance shall transfer of this document be deemed a sale or constitute a transfer of the license to use this document.

14/11/2011 10:06:32 AM

REVISIONS		
No	Date	Description

PROJECT TITLE
380 DEGREES
 380-386 BAY STREET
 BRIGHTON, 3186
 (Cnr BAY ST & MALE ST)

DRAWING TITLE
SHADOW DIAGRAMS

SCALE: @ B1
1 : 250

DATE:
 14/11/2011

DWG No:
TP03.02

PROJECT No:
210237

DRAWN BY:
 KL

REV

153 STURT STREET SOUTHBANK
 VIC 3006 AUSTRALIA
 T 61 3 9268 6800
 F 61 3 9268 6888
 info@rothelwman.com.au
 www.rothelwman.com.au
 ACN 005 783 997 ©copyright

ROTHELOWMAN